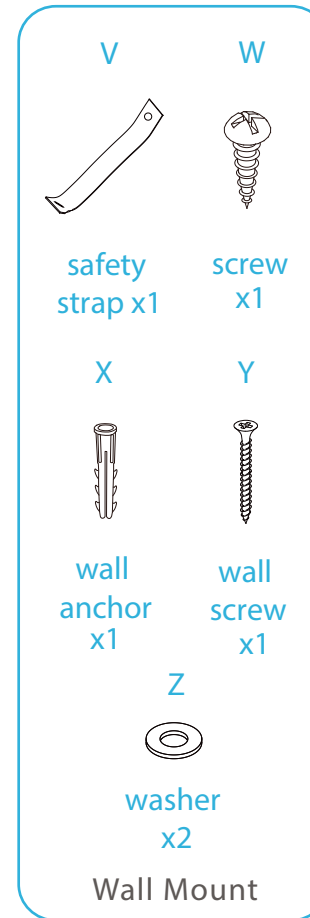
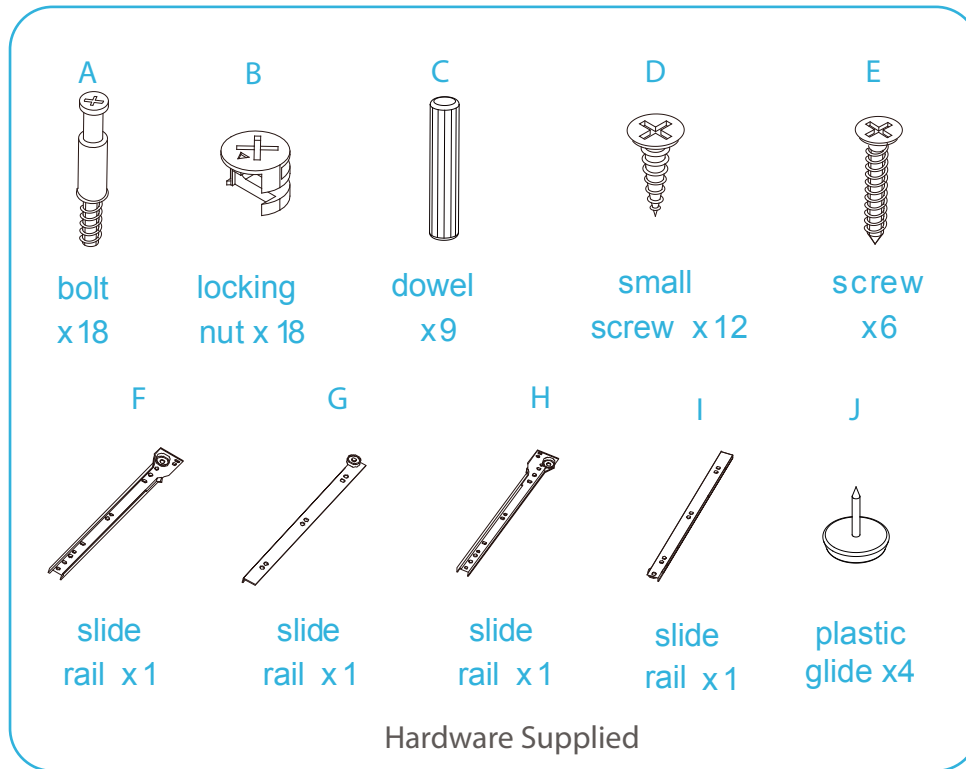


Jesse Console Table

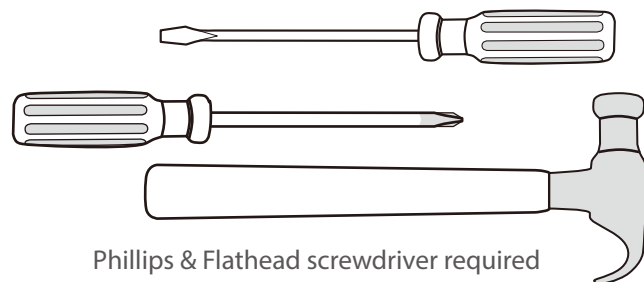
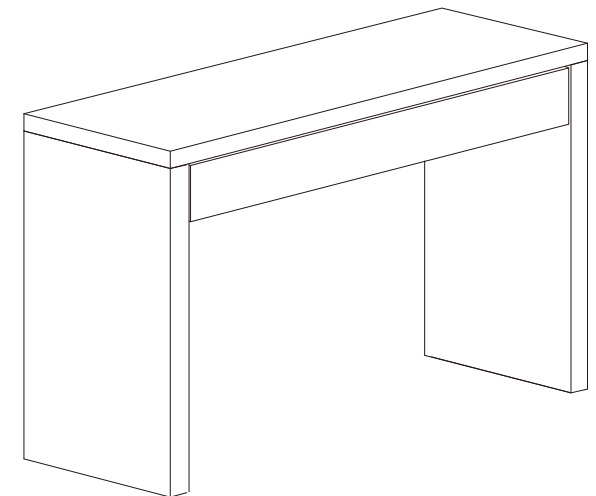
Assembly Instructions

Thank you for your purchase.
Please follow the instructions below for correct assembly.

mocka



WARNING: Any furniture that is not anchored to a wall has the potential to tip over in certain circumstances, i.e. if a child attempts to climb up on the furniture or in the event of an earthquake. Accordingly, we recommend that all furniture is anchored to a wall. We supply a free safety wall anchor with all furniture sold and we recommend these are used to prevent your product tipping. The fixing device provided should fit most wall types, but please note that different wall materials may require different fixing devices from those supplied.



Phillips & Flathead screwdriver required

For quicker assembly, we recommend the use of a power drill on a low-speed setting.

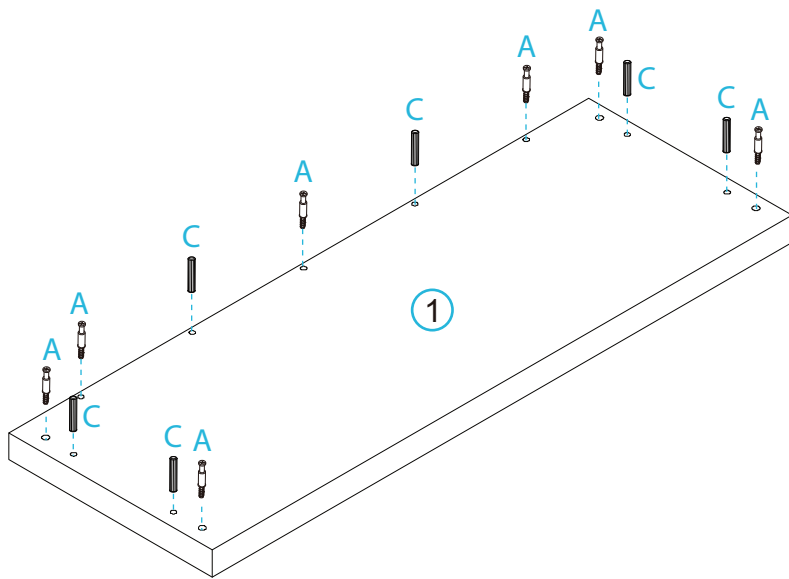
*We recommend using a Flathead screwdriver to tighten all locking nuts 100% before first use. Please clear any loose wood from the locking nut holes before inserting the nut to ensure it locks 100%.

Jesse Console Table

Assembly Instructions

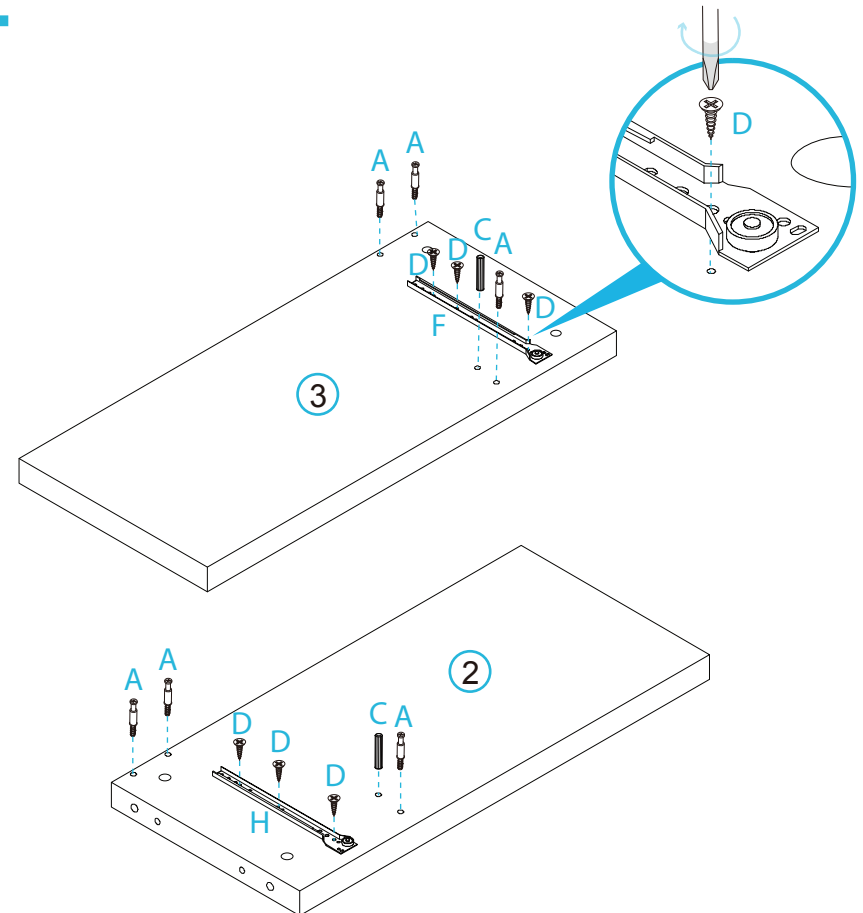
mocka

1



Insert 7x bolts (A) and 6x dowels (C) into panel [1].

2



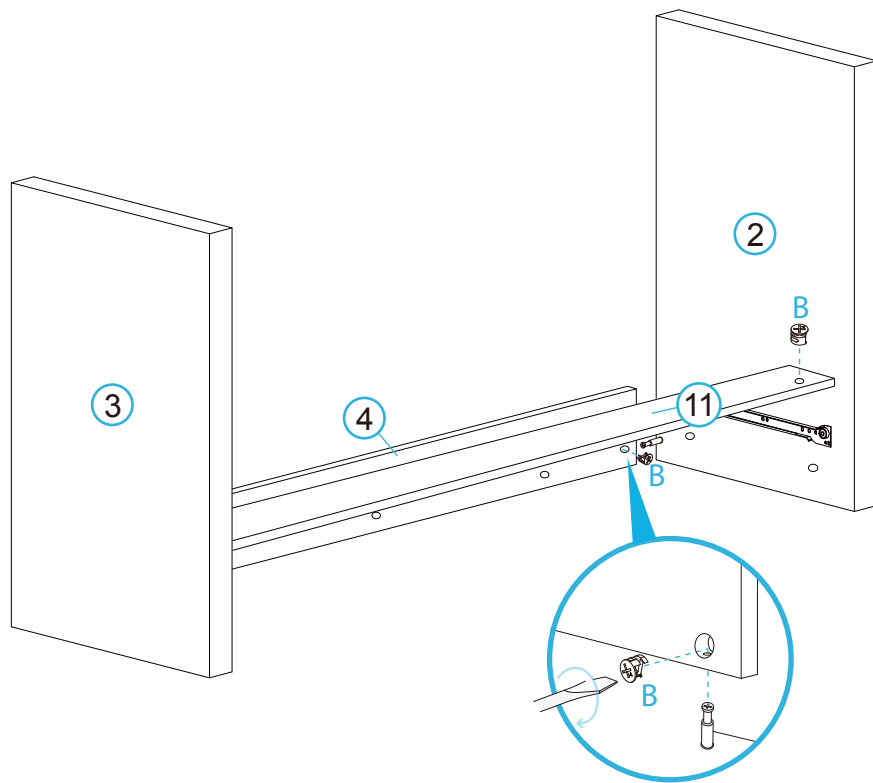
Insert 1x dowel (C) and 3x bolts (A) into panel [3], and secure 1x slide rail (F) with 3x small screws (D). Insert 1x dowel (C) and 3x bolts (A) into panel [2], and secure 1x slide rail (H) with 3x small screws (D). Tighten with a screwdriver.

Jesse Console Table

Assembly Instructions

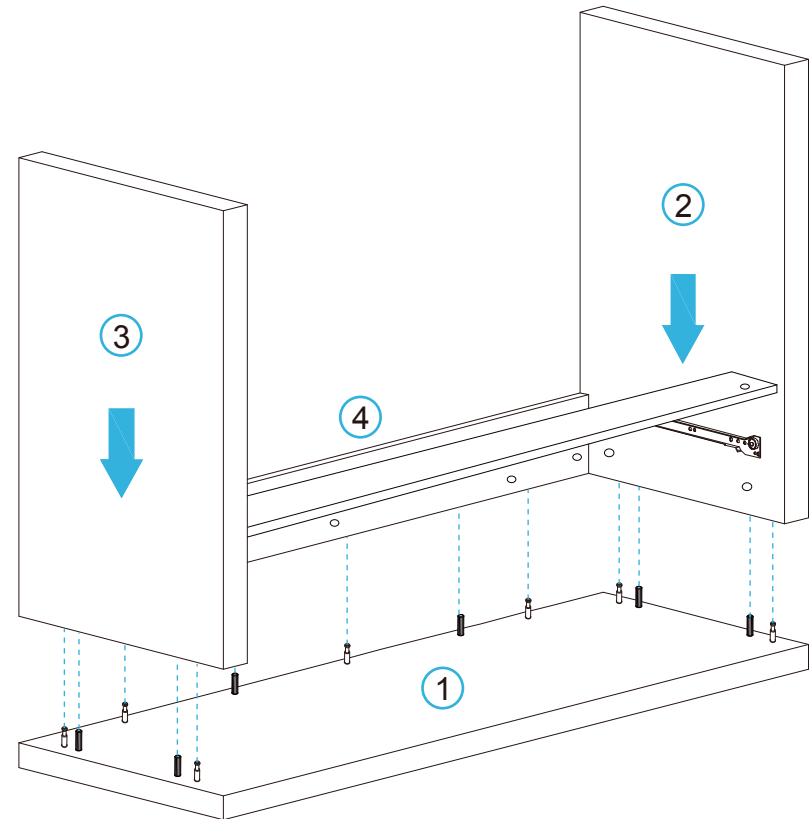
mocka

3



Attach panel [11] to panels [2] and [3] with 2x locking nuts (B). Attach panel [4] to panels [2] and [3] with 4x locking nuts (B). Tighten with a screwdriver.

4



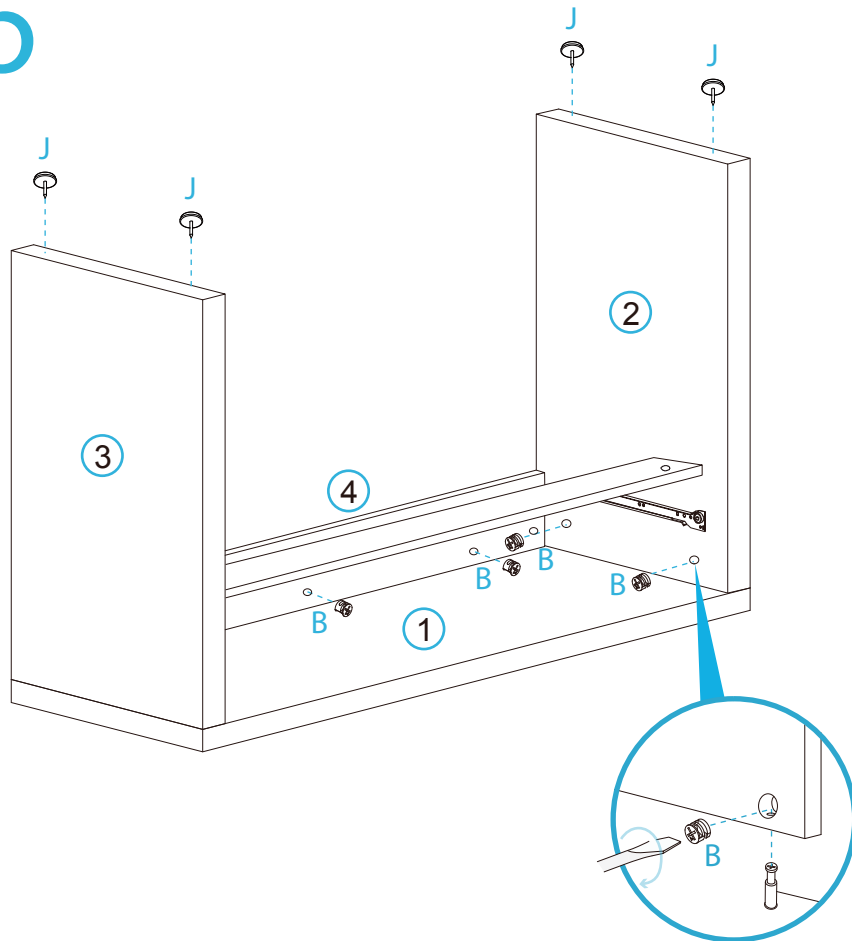
Attach the main panel to panel [1].

Jesse Console Table

Assembly Instructions

mocka

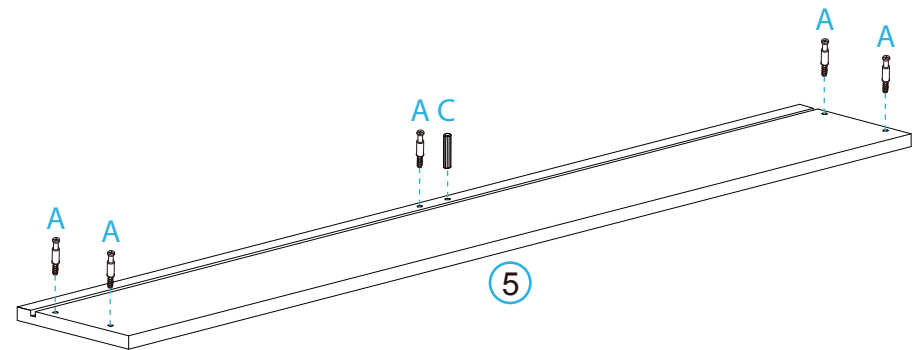
5



Secure the bolts to panel [1] using 7x locking nuts (B) and tighten with a screwdriver. Attach 4x plastic glides (J) to the ends of the legs using a hammer.

6

Drawer x1



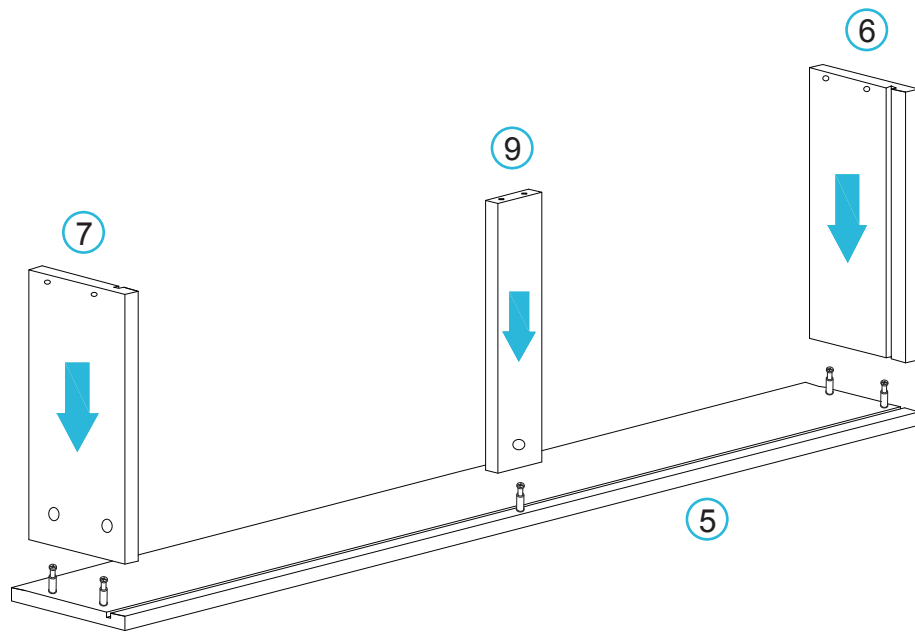
Insert 5x bolts (A) and 1x dowel (C) into panel [5].

Jesse Console Table

Assembly Instructions

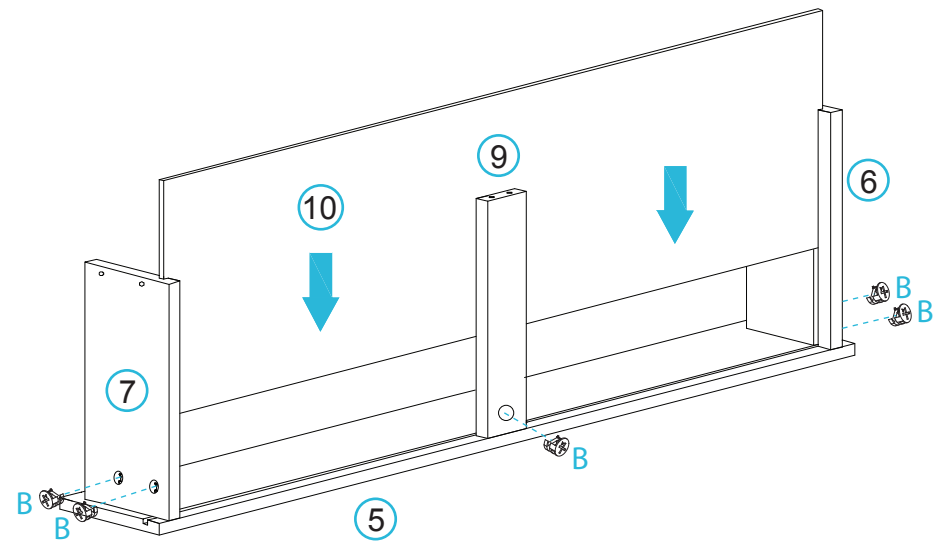
mocka

7



Attach panels [6], [7] and [9] by the bolts on panel [5].

8



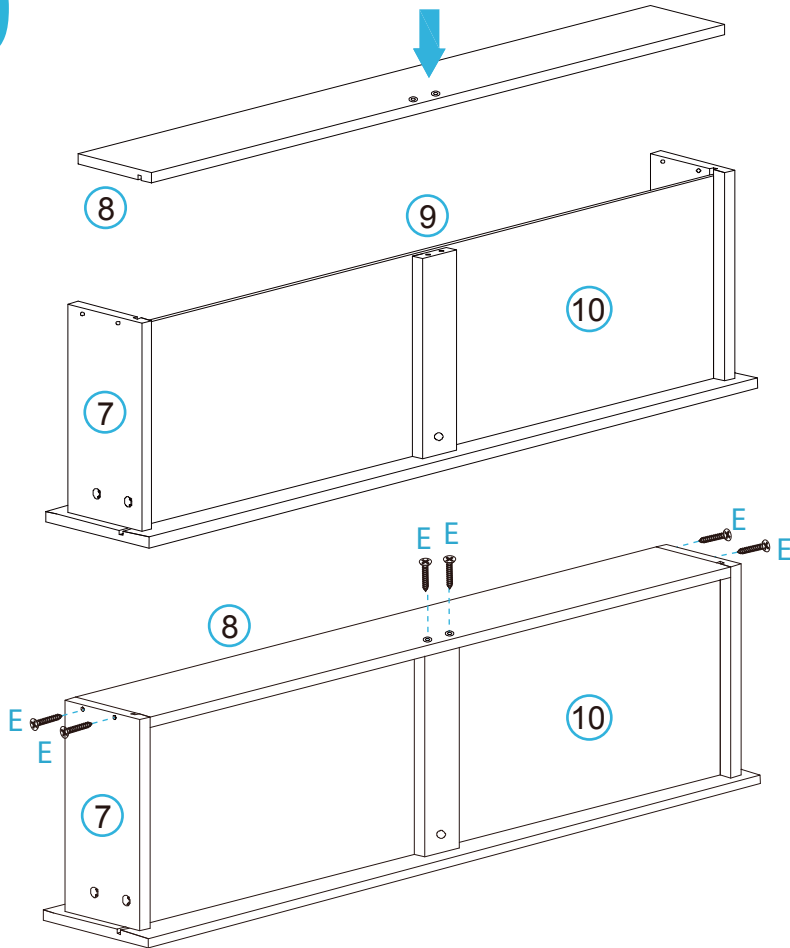
Fasten the bolts in panels [6], [7] and [9] with 5x locking nuts (B) and tighten with a screwdriver. Slide panel [10] along the grooves between panels [6] and [7] to form the base of the drawer.

Jesse Console Table

Assembly Instructions

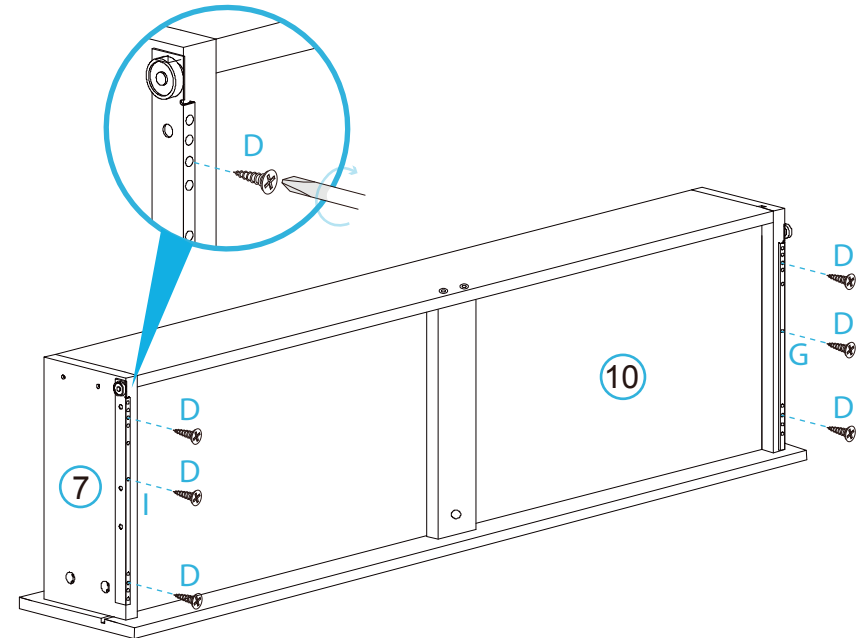
The Mocka logo, featuring the word "mocka" in a lowercase, sans-serif font. The letter "o" is colored blue, while the other letters are black.

9



Attach panel [8] to the rest of the drawer and secure with 2x screws (E) in panel [9] and 4x screws (E) on the sides of the drawer. Tighten with a screwdriver.

10



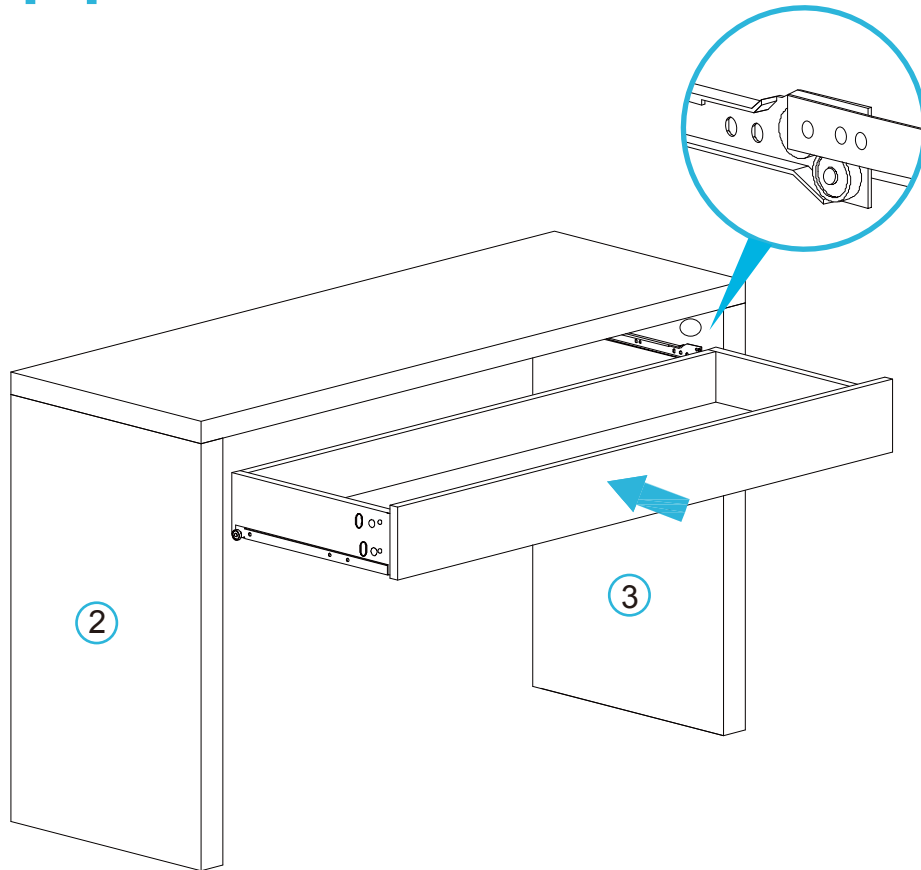
Attach 2x slide rails (I) and (G) to the sides of the drawer and secure with 6x small screws (D). Tighten with a screwdriver.

Jesse Console Table

Assembly Instructions

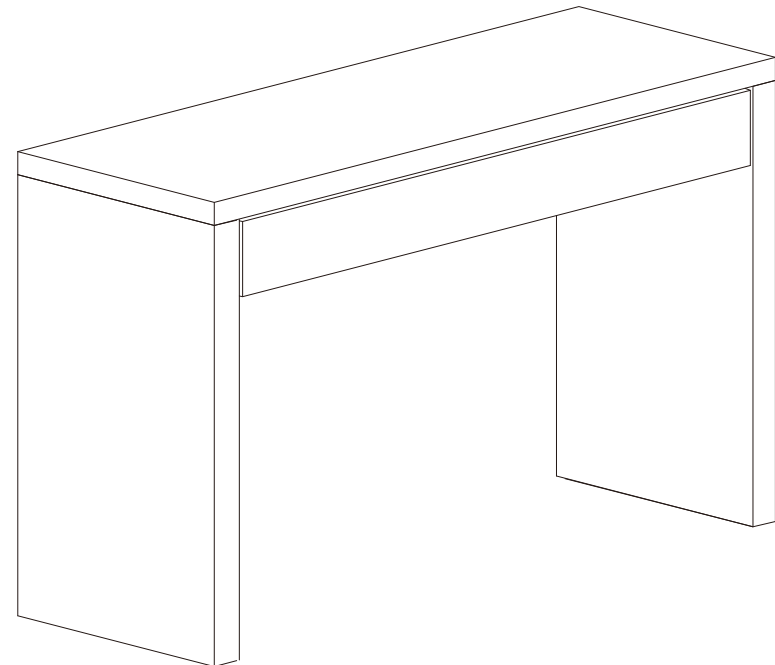
mocka

11



Insert the completed drawer into the desk, ensuring the rails are properly aligned and the drawer slides easily along.

12



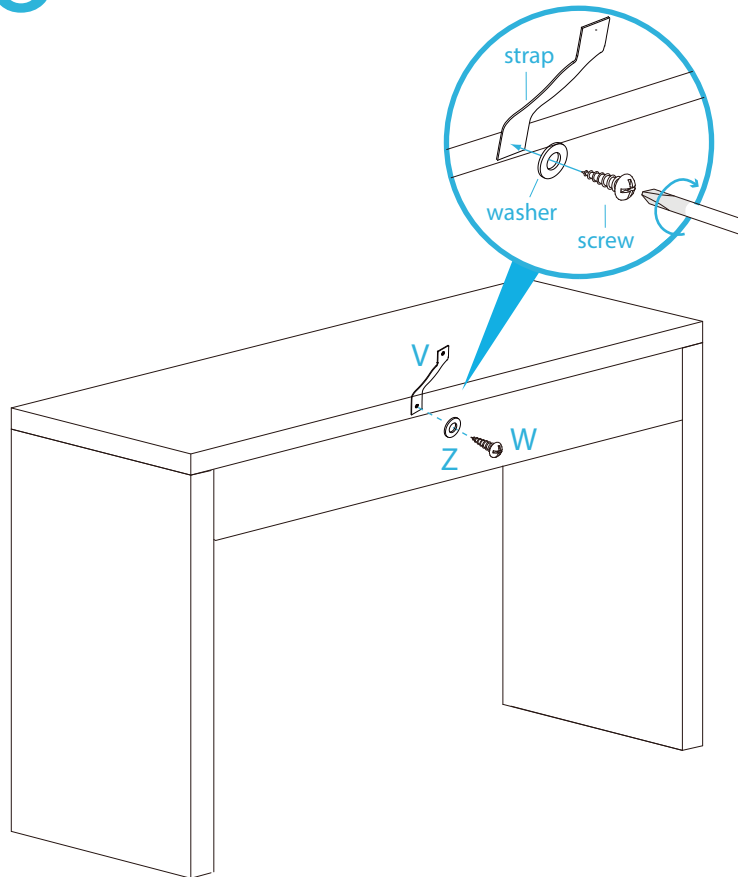
Lift the completed desk into the desired location, do not drag.

Jesse Console Table

Assembly Instructions

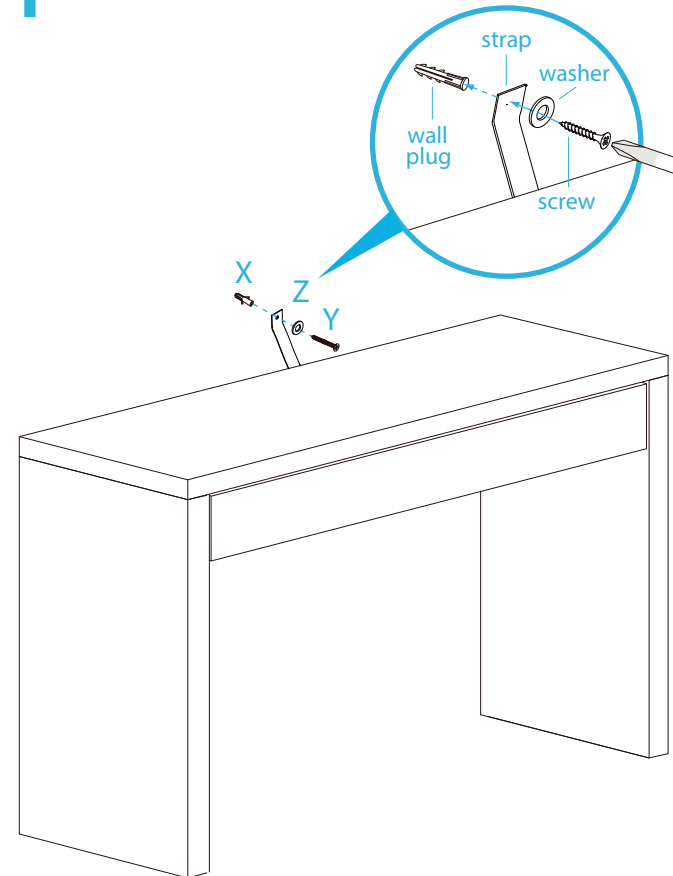
mocka

13 Wall Mount



Attach 1x safety strap (V) to the top of the back side of the unit using 1x washer (Z) and 1x screw (W). Tighten with a screwdriver.

14



Lift the unit into the desired location up against a wall. Use a drill to create a small hole lining up with the top of the safety strap (V). Fasten to wall using 1x wall plug (X) and 1x wall screw (Y). Ensure unit is balanced and steady before use. You're done, enjoy!